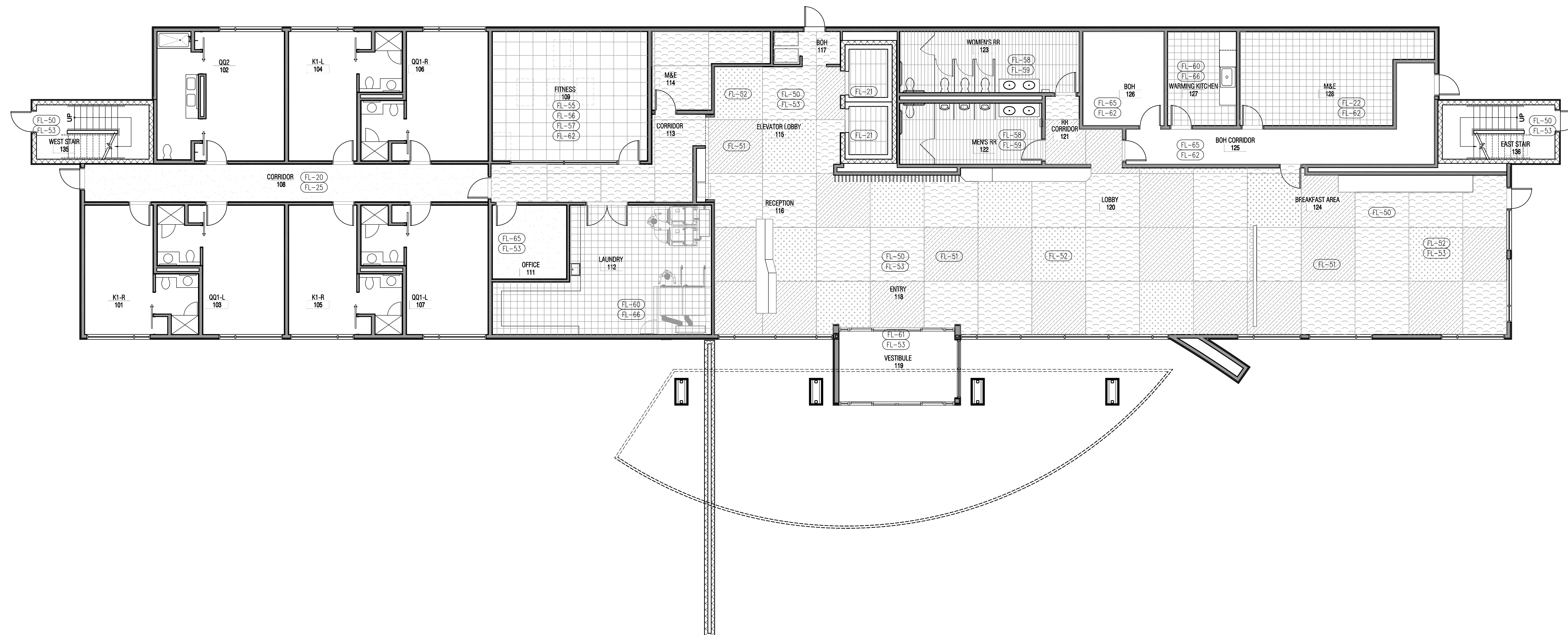


TYPICAL FLOOR FINISH PLAN 1/8" = 1'-0" 2



FINISH PLAN LEVEL 1 1/8" = 1'-0" 1

GENERAL NOTES

- SEE FINISH SCHEDULE ON SHEET A604 FOR ALL FINISHES NOTED ON PLANS THUSLY (XX-XX)
- SEE FINISH LEGEND ON SHEET A605 FOR ALL FINISH SPECIFICATION.
- SEE ENLARGED GUESTROOM PLANS ON A201 THROUGH A206 FOR ALL FINISHES WITHIN THE INDIVIDUAL GUESTROOM.

**BW** Best Western.  
Hotels & Resorts  
6201 North 24th Parkway  
Phoenix, Arizona 85016-2023, USA  
(602)957-4200 (602)957-5713 (FAX)

RESPONSIBILITIES:  
YOU EXPRESSLY UNDERSTAND AND AGREE THAT: YOUR USE OF AND RELIANCE UPON ANY AND ALL OF THE PLANS AND/OR SPECIFICATIONS PROVIDED BY BEST WESTERN INTERNATIONAL, INC. ("BWI"), IS AT YOUR SOLE RISK AND IS MADE AVAILABLE ON AN "AS IS" AND "AS AVAILABLE" BASIS. BWI MAKES NO EXPRESS OR IMPLIED REPRESENTATIONS, WARRANTIES, OR GUARANTEES WITH REGARD TO THE APPROPRIATENESS, ACCURACY, SUFFICIENCY, CORRECTNESS, NEUTRALITY, VALUE, COMPLETENESS, OR TIMELINESS OF THE BWI PLANS, SPECIFICATIONS AND/OR RELATED CONTENT, INCLUDING WITHOUT LIMITATION COMPLIANCE WITH THE AMERICANS WITH DISABILITIES ACT, FEDERAL, STATE OR LOCAL LAWS, RULES, REGULATIONS OR CODE, OR ADEQUACY FOR ANY SPECIFIC OR INTENDED PURPOSE. BWI EXPRESSLY DISCLAIMS ALL WARRANTIES OF ANY KIND, WHETHER EXPRESS OR IMPLIED, INCLUDING, BUT NOT LIMITED TO THE IMPLIED WARRANTIES OF MERCHANTABILITY, FITNESS FOR A PARTICULAR PURPOSE AND NON-INFRINGEMENT.

IN NO EVENT SHALL BWI BE LIABLE FOR ANY DIRECT, INDIRECT, PUNITIVE, INCIDENTAL, SPECIAL, CONSEQUENTIAL DAMAGES OR ANY DAMAGES WHATSOEVER INCLUDING, WITHOUT LIMITATION, DAMAGES FOR LOSS OF USE, DATA OR PROFITS, ARISING OUT OF OR IN ANY WAY CONNECTED WITH THE USE OR PERFORMANCE OF ANY BWI PROVIDED PLANS OR SPECIFICATIONS, OR OTHERWISE ARISING OUT OF THE USE OF THE BWI PLANS OR SPECIFICATIONS, IN WHOLE OR IN PART, WHETHER BASED ON CONTRACT, TORT, NEGLIGENCE, STRICT LIABILITY OR OTHERWISE, EVEN IF BWI HAS BEEN ADVISED OF THE POSSIBILITY OF DAMAGES. ALL USE OF THE PLAN(S) AND/OR SPECIFICATION(S) IS DONE AT YOUR OWN DISCRETION AND RISK AND YOU WILL BE SOLELY RESPONSIBLE FOR ANY DAMAGE THAT RESULTS THEREFROM.

IF YOU ARE DISSATISFIED WITH ANY PORTION OF THE BWI PLANS AND/OR SPECIFICATIONS, OR WITH ANY OF THESE TERMS OF USE, YOUR SOLE AND EXCLUSIVE REMEDY IS TO DISCONTINUE USING SUCH PLANS AND SPECIFICATIONS. YOU ARE SOLELY RESPONSIBLE FOR DETERMINING THE ADEQUACY AND SUITABILITY OF ANY PLAN OR SPECIFICATION FOR YOUR PARTICULAR NEEDS. YOU ARE HEREBY ENCOURAGED BY BWI TO CONSULT WITH THE APPROPRIATE PROFESSIONAL ADVISORS TO DETERMINE THE ADEQUACY, SUITABILITY AND COMPLIANCE WITH APPLICABLE LAWS FOR ANY SUCH PLAN(S) AND/OR SPECIFICATION(S).

NOT FOR CONSTRUCTION

NO.	DATE	REVISIONS	ISSUE
1	3/15/16		

PROJECT NAME:  
**GLO**  
BEST WESTERN

PROJECT NUMBER:  
16-Glo-V1

DATE: 02-01-16

SHEET DESCRIPTION:  
FINISH FLOOR PLAN

SCALE: 1/8" = 1'-0"

SHEET NUMBER:  
**A141**

NOTES TO SHEET 1/8" = 1'-0"