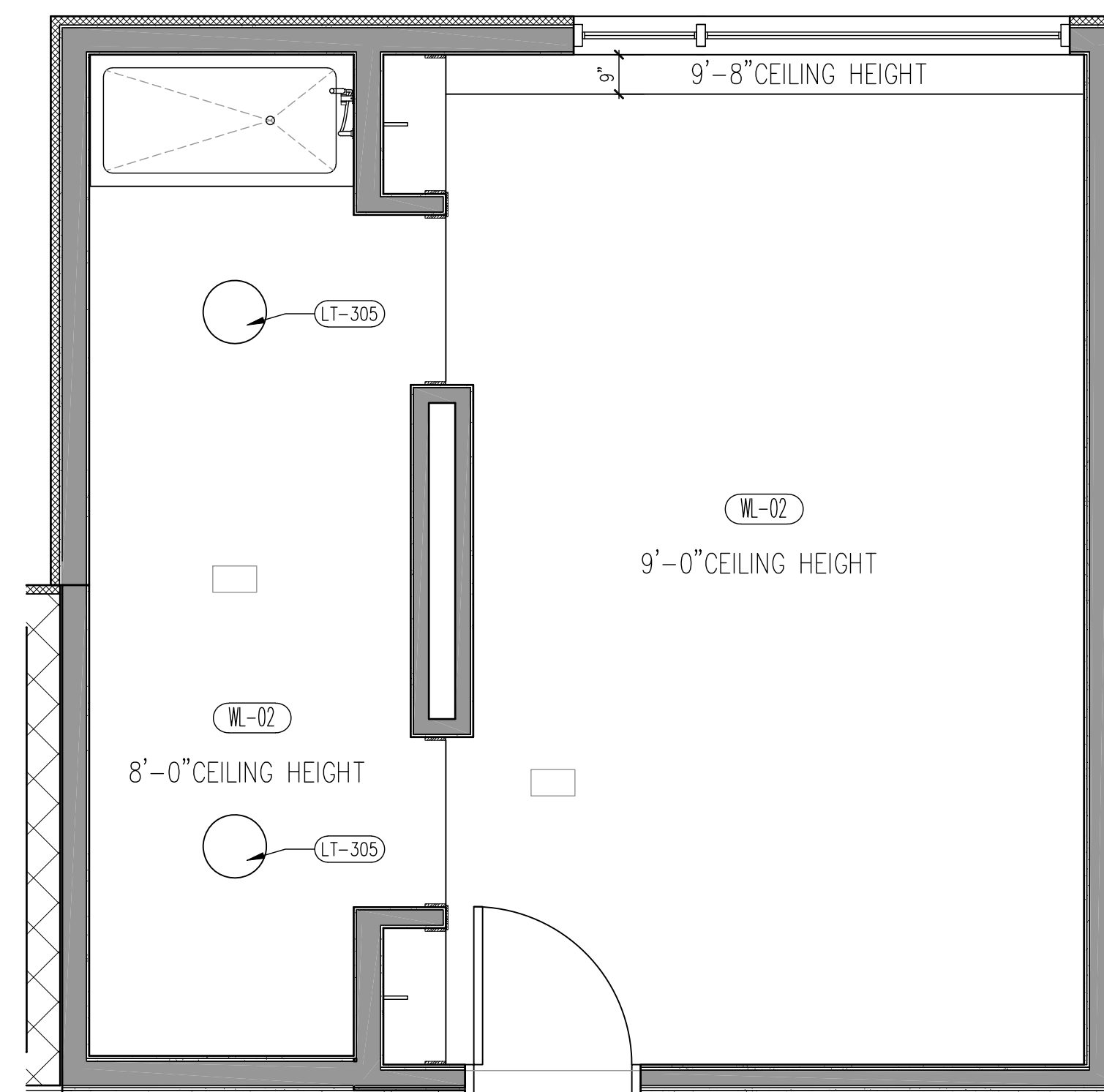
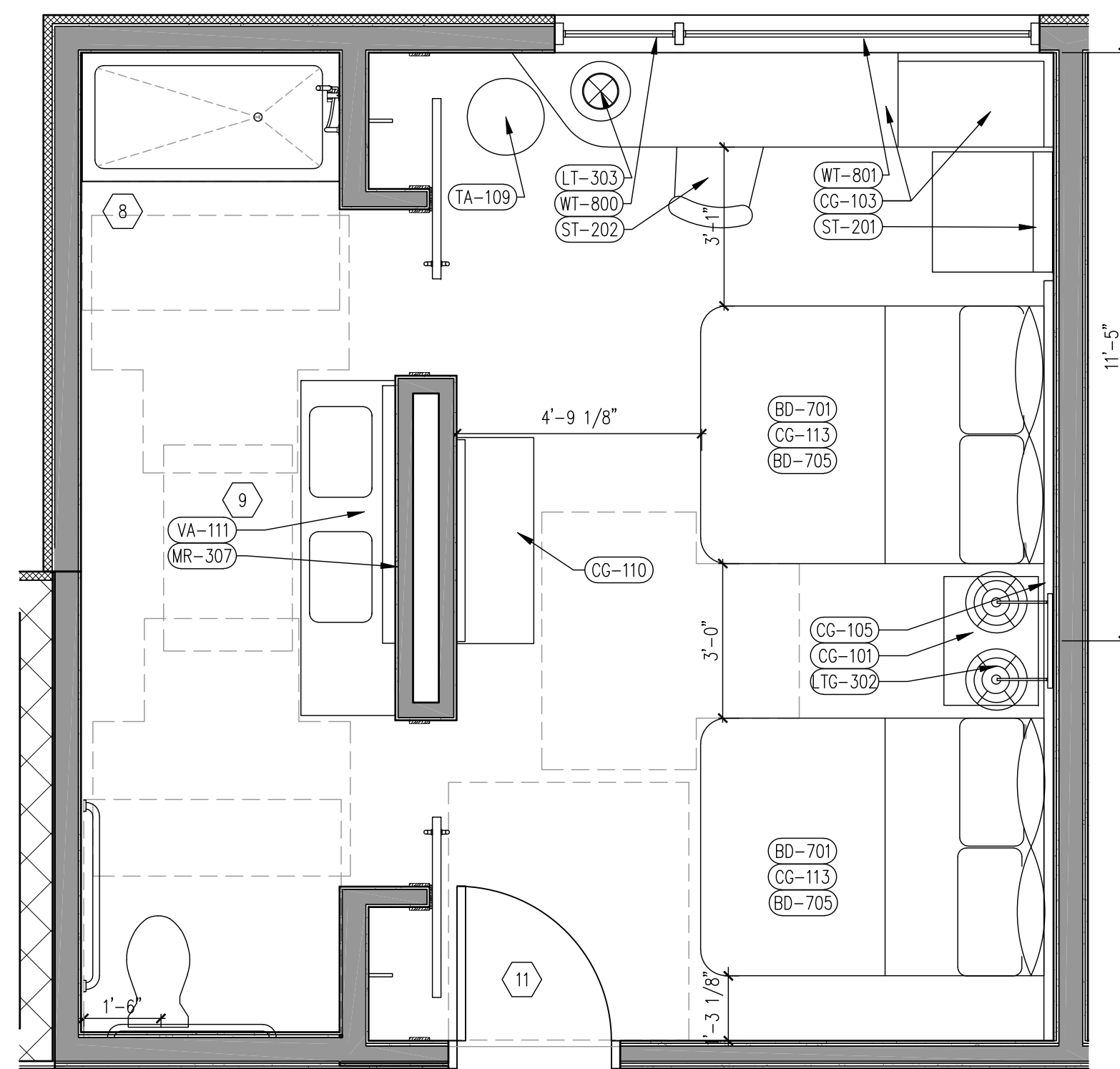


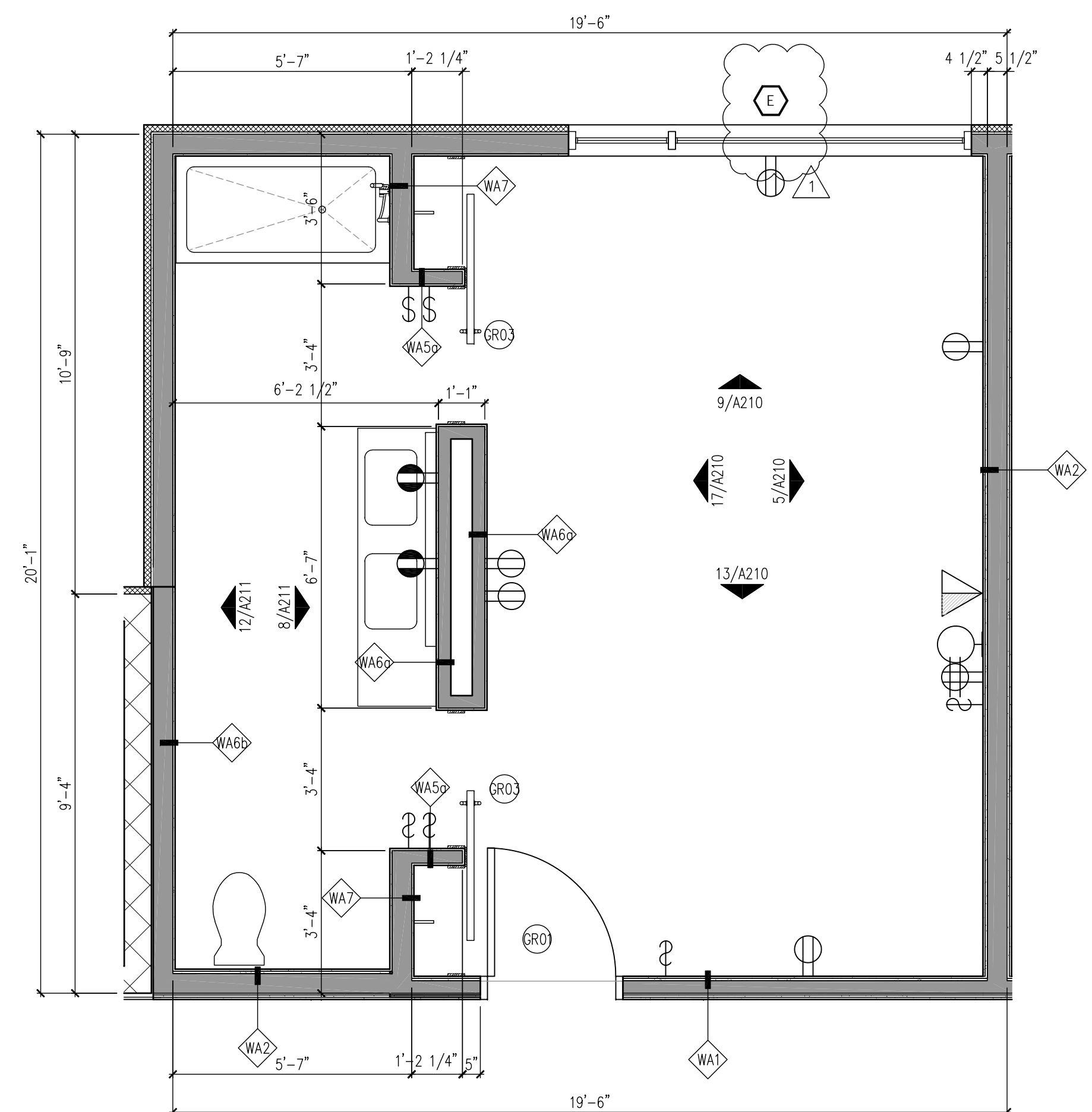
QQ2 FINISH PLAN SCALE: 3/8" = 1'-0" 15



QQ2 REFLECTED CEILING PLAN SCALE: 3/8" = 1'-0" 7



QQ2 FURNITURE PLAN SCALE: 3/8" = 1'-0" 13



NOTE:
DEMISING WALL FOR UNITS K1, Q01 & Q02
AT FIRST LEVEL TO BE PARTITION TYPE WA2.
DEMISING WALL FOR ALL UNITS AT LEVELS 2,
3 & 4 TO BE PARTITION TYPE WA3.

QQ2 FLOOR PLAN SCALE: 3/8" = 1'-0" 5

- KEY NOTES:**
- 1 SHOWER ENCLOSURE WITH TEMPERED GLASS. TO BE ETCHED OR HAVE FILM TO MINIMIZE TRANSPARENCY
 - 2 PREMANUFACTURED SHOWER PAN
 - 3 PROVIDE BLOCKING IN WALL AT ALL MIRRORS, TVS, AND WALL HUNG BARN DOORS
 - 4 FLOOR DRAIN AT ROLL-IN SHOWER.
 - 5 WALL MOUNTED SHOWER ROD--PROVIDE BLOCKING AS REQ'D
 - 6 GRAB BARS AT ADA ROOMS. PROVIDE BLOCKING.
 - 7 60" TURNING RADIUS AS REQUIRED AT ADA ROOMS.
 - 8 30" X 60" CLEAR FLOOR SPACE IN FRONT OF TUB AS REQUIRED AT ADA ROOMS.
 - 9 30" X 48" CLEAR SPACE AT VANITY AS REQUIRED AT ADA ROOMS.
 - 10 BOTTOM OF REFLECTIVE SURFACE OF MIRROR TO BE MOUNTED AT 40" AFF
 - 11 60" X 60" CLEAR FLOOR SPACE AT ENTRY DOOR

INTERIOR KEYNOTES

1. REFER TO CORRIDOR PLAN BY FLOOR FOR SPECIFIC WINDOW LOCATIONS. POSITION OF WALL MIRROR, TV, AND LIGHT FIXTURES MIGHT MOVE BASED ON THE WINDOW LAYOUT
2. REFER TO PLUMBING SCHEDULE FOR FIXTURE INFORMATION
3. PROVIDE SIDE CHANNELS AT MULLIONS TO PREVENT LIGHT LEAK AROUND EDGES OF ROLLER SHADES
4. PROVIDE ACCESS PANELS AS REQUIRED.
5. SEE FINISH SCHEDULE ON A604 FOR ALL FINISHES NOTED ON ELEVATIONS THUSLY (xx-xx)
6. SEE FINISH LEGEND ON SHEET A605 FOR ALL FINISH SPECIFICATIONS
7. CASEGOODS, SIGNATURE ELEMENTS AND PRINTED GOODS ARE PROPRIETARY TO THE BW GLO AND ARE NOT AVAILABLE FOR PROJECTS BEYOND THE GLO PROTOTYPE
8. INTERIOR SPECIFICATIONS FOR ALL FF&E AVAILABLE THROUGH BEST WESTERN SUPPLY AND STUDIO DESIGN.
CONTACT: 800-582-3601
OPTION 4 FOR ADDITIONAL INFORMATION
9. SHOWER ENCLOSURE AND VANITY INTERIOR SPECIFICATION AVAILABLE THROUGH BEST WESTERN SUPPLY AND STUDIO DESIGN.
CONTACT: 800-582-3601
OPTION 4 FOR ADDITIONAL INFORMATION

GENERAL NOTES

Best Western.
Hotels & Resorts
6201 North 24th Parkway
Phoenix, Arizona 85016-2023, USA
(602)957-4200 (602)957-5713 (FAX)

RESPONSIBILITIES:
YOU EXPRESSLY UNDERSTAND AND AGREE THAT YOUR USE OF AND RELIANCE UPON ANY AND ALL OF THE PLANS AND/OR SPECIFICATIONS PROVIDED BY BEST WESTERN INTERNATIONAL, INC. ("BWI"), IS AT YOUR SOLE RISK AND IS MADE AVAILABLE ON AN "AS IS" AND "AS AVAILABLE" BASIS. BWI MAKES NO EXPRESS OR IMPLIED REPRESENTATIONS, WARRANTIES, OR GUARANTEES WITH REGARD TO THE APPROPRIATENESS, ACCURACY, SUFFICIENCY, CORRECTNESS, NEUTRALITY, VALUE, COMPLETENESS, OR TIMELINESS OF THE BWI PLANS, SPECIFICATIONS AND/OR RELATED CONTENT, INCLUDING WITHOUT LIMITATION COMPLIANCE WITH THE AMERICANS WITH DISABILITIES ACT, FEDERAL, STATE OR LOCAL LAWS, RULES, REGULATIONS OR CODE, OR ADEQUACY FOR ANY SPECIFIC OR INTENDED PURPOSE. BWI EXPRESSLY DISCLAIMS ALL WARRANTIES OF ANY KIND, WHETHER EXPRESS OR IMPLIED, INCLUDING, BUT NOT LIMITED TO THE IMPLIED WARRANTIES OF MERCHANTABILITY, FITNESS FOR A PARTICULAR PURPOSE AND NON-INFRINGEMENT.

IN NO EVENT SHALL BWI BE LIABLE FOR ANY DIRECT, INDIRECT, PUNITIVE, INCIDENTAL, SPECIAL, CONSEQUENTIAL DAMAGES OR ANY DAMAGES WHATSOEVER INCLUDING, WITHOUT LIMITATION, DAMAGES FOR LOSS OF USE, DATA OR PROFITS ARISING OUT OF OR IN ANY WAY CONNECTED WITH THE USE OR PERFORMANCE OF ANY BWI PROVIDED PLANS OR SPECIFICATIONS, OR OTHERWISE ARISING OUT OF THE USE OF THE BWI PLANS OR SPECIFICATIONS, IN WHOLE OR IN PART, WHETHER BASED ON CONTRACT, TORT, NEGLIGENCE, STRICT LIABILITY OR OTHERWISE, EVEN IF BWI HAS BEEN ADVISED OF THE POSSIBILITY OF DAMAGES. ALL USE OF THE PLAN(S) AND/OR SPECIFICATION(S) IS DONE AT YOUR OWN DISCRETION AND RISK AND YOU WILL BE SOLELY RESPONSIBLE FOR ANY DAMAGE THAT RESULTS THEREFROM.

IF YOU ARE DISSATISFIED WITH ANY PORTION OF THE BWI PLANS AND/OR SPECIFICATIONS, OR WITH ANY OF THESE TERMS OF USE, YOUR SOLE AND EXCLUSIVE REMEDY IS TO DISCONTINUE USING SUCH PLANS AND SPECIFICATIONS. YOU ARE SOLELY RESPONSIBLE FOR DETERMINING THE ADEQUACY AND SUITABILITY OF ANY PLAN OR SPECIFICATION FOR YOUR PARTICULAR NEEDS. YOU ARE HEREBY ENCOURAGED BY BWI TO CONSULT WITH THE APPROPRIATE PROFESSIONAL ADVISORS TO DETERMINE THE ADEQUACY, SUITABILITY AND COMPLIANCE WITH APPLICABLE LAWS FOR ANY SUCH PLAN(S) AND/OR SPECIFICATION(S).

NOT FOR CONSTRUCTION

NO.	DATE	REVISIONS	ISSUE
1	3/15/16		

PROJECT NAME:
GLO
BEST WESTERN

PROJECT NUMBER:
16-Glo-V1

DATE: 02-01-16

SHEET DESCRIPTION:
ENLARGED GUESTROOM PLANS QUEEN ADA

SCALE: 1"

SHEET NUMBER:
A204
QUEEN GUESTROOM