

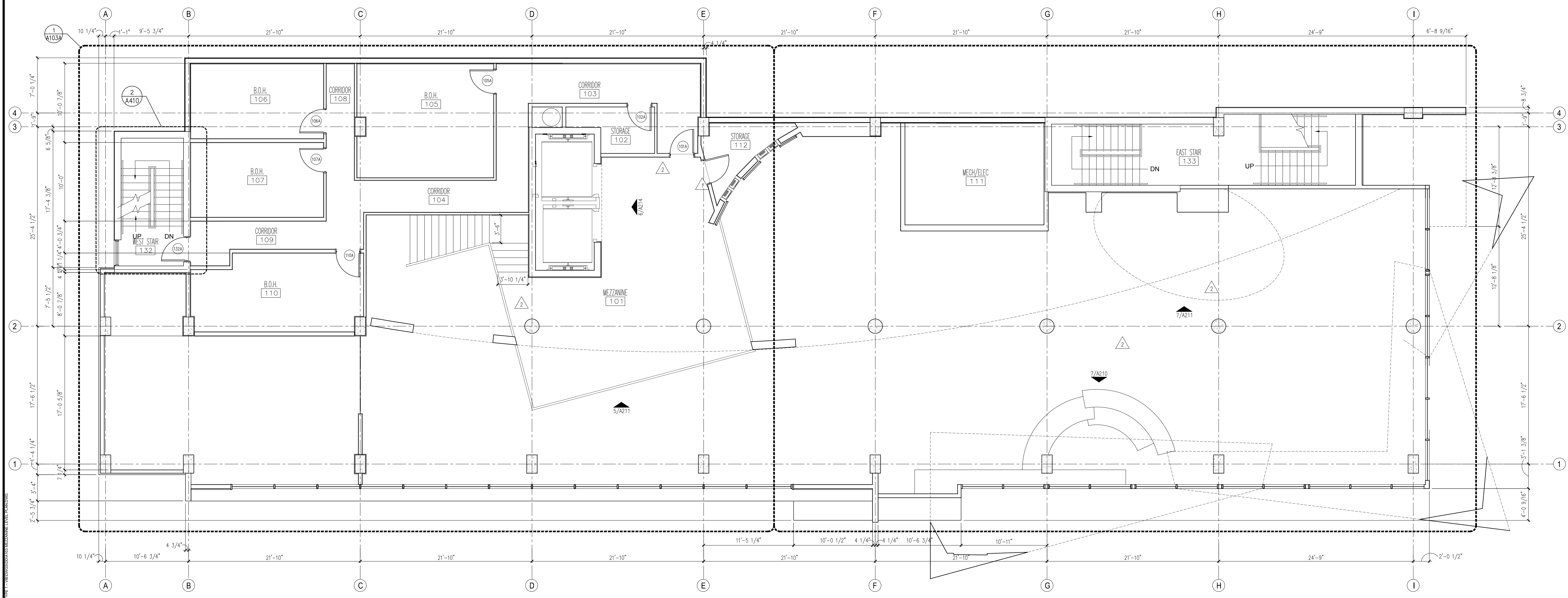
1. REFER TO ENLARGED PLANS FOR PARTITION TYPES, INTERIOR DIMENSIONS, DOOR & WINDOW TAGS, AND OTHER FLOOR PLAN INFORMATION.
2. REFER TO DOOR SCHEDULE FOR DOOR TYPES.
3. REFER WINDOW SCHEDULE FOR WINDOW TYPES.
4. REFER TO FINISH SCHEDULE FOR FINISH INFORMATION.
5. FIELD VERIFY FINAL DIMENSIONS AT ALL MILLWORK AREAS PRIOR TO FABRICATION.
6. REFER TO ENLARGED UNIT SHEETS FOR UNIT RCP INFORMATION.
7. REFER TO LANDSCAPE DRAWINGS FOR ADDITIONAL PLAZA INFORMATION.
8. ENLARGED TOWER PLANS ARE SOUTH TOWER - NORTH TOWER IS SIMILAR OPPOSITE HAND TYPICAL.
9. ALL EXPOSED CONCRETE WALLS AND CONCRETE COLUMNS LOCATED IN PUBLIC AREAS (CONDOMINIUM AND HOTEL) WILL RECEIVE 1/2" FURRING CHANNEL WITH 1/2" GYPSUM BOARD AND THE PROPER CORNERBEADS AT GYPSUM 90 DEGREE ANGLES.
10. REFER TO ENLARGED STAIR PLANS FOR PARTITION TYPES.
11. ALL CONDOMINIUM PARTITIONS WILL BE WA18 UNLESS OTHERWISE NOTED.

**GENERAL PLAN NOTES**

**RESPONSIBILITIES:**  
YOU EXPRESSLY UNDERSTAND AND AGREE THAT YOUR USE OF AND RELIANCE UPON ANY AND ALL OF THE PLANS, SPECIFICATIONS AND/OR RELATED CONTENT (COLLECTIVELY, "PLANS") PROVIDED BY BEST WESTERN INTERNATIONAL, INC. ("BWI"), IS AT YOUR SOLE RISK AND IS MADE AVAILABLE ON AN "AS IS" AND "AS AVAILABLE" BASIS. BWI MAKES NO EXPRESS OR IMPLIED REPRESENTATIONS, WARRANTIES, OR GUARANTEES WITH REGARD TO THE APPROPRIATENESS, ACCURACY, SUFFICIENCY, CORRECTNESS, VERACITY, VALUE, COMPLETENESS, OR TIMELINESS OF THE BWI PLANS, INCLUDING WITHOUT LIMITATION COMPLIANCE WITH THE AMERICANS WITH DISABILITIES ACT, FEDERAL, STATE OR LOCAL LAWS, RULES, REGULATIONS OR CODE, OR ADEQUACY FOR ANY SPECIFIC OR INTENDED PURPOSE. BWI EXPRESSLY DISCLAIMS ALL WARRANTIES OF ANY KIND, WHETHER EXPRESS OR IMPLIED, INCLUDING, BUT NOT LIMITED TO THE IMPLIED WARRANTIES OF MERCHANTABILITY, FITNESS FOR A PARTICULAR PURPOSE AND NON-INFRINGEMENT.

IN NO EVENT SHALL BWI BE LIABLE FOR ANY DIRECT, INDIRECT, PUNITIVE, INCIDENTAL, SPECIAL, CONSEQUENTIAL DAMAGES OR ANY DAMAGES WHATSOEVER INCLUDING, WITHOUT LIMITATION, DAMAGES FOR LOSS OF USE, DATA OR PROFITS, ARISING OUT OF OR IN ANY WAY CONNECTED WITH THE USE OR PERFORMANCE OF ANY BWI PROVIDED PLANS OR OTHERWISE ARISING OUT OF THE USE OF THE BWI PLANS, IN WHOLE OR IN PART, WHETHER BASED ON CONTRACT, TORT, NEGLIGENCE, STRICT LIABILITY OR OTHERWISE, EVEN IF BWI HAS BEEN ADVISED OF THE POSSIBILITY OF DAMAGES. ALL USE OF THE PLANS IS DONE AT YOUR OWN DISCRETION AND RISK AND YOU WILL BE SOLELY RESPONSIBLE FOR ANY DAMAGE THAT RESULTS THEREFROM.

IF YOU ARE DISSATISFIED WITH ANY PORTION OF THE BWI PLANS, OR WITH ANY OF THESE TERMS OF USE, YOUR SOLE AND EXCLUSIVE REMEDY IS TO DISCONTINUE USING SUCH PLANS. YOU ARE SOLELY RESPONSIBLE FOR DETERMINING THE ADEQUACY AND SUITABILITY OF ANY PLANS FOR YOUR PARTICULAR NEEDS. YOU ARE HEREBY INCOURAGED BY BWI TO CONSULT WITH THE APPROPRIATE PROFESSIONAL ADVISORS TO DETERMINE THE ADEQUACY, SUITABILITY AND COMPLIANCE WITH APPLICABLE LAWS FOR ANY SUCH PLANS.



**NOT FOR CONSTRUCTION**

NO.	DATE	ISSUE
△	7/24/2015	DRAWING REVISIONS
△	10/16/2015	DRAWING REVISIONS

PROJECT NAME:  
**Vib**

PROJECT NUMBER:  
**15-Vtb-V1**

DATE: 5-4-17

SHEET DESCRIPTION:  
**MEZZANINE LEVEL FLOOR PLAN**

SCALE: 3/16" = 1'-0"

SHEET NUMBER:  
**A103 FLOOR PLAN**